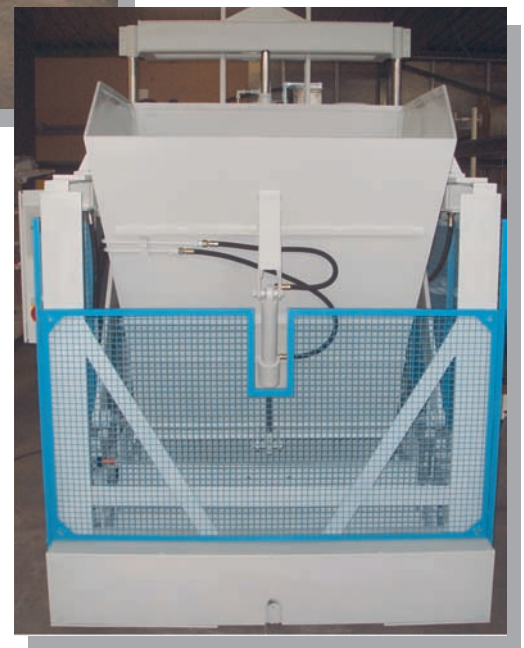
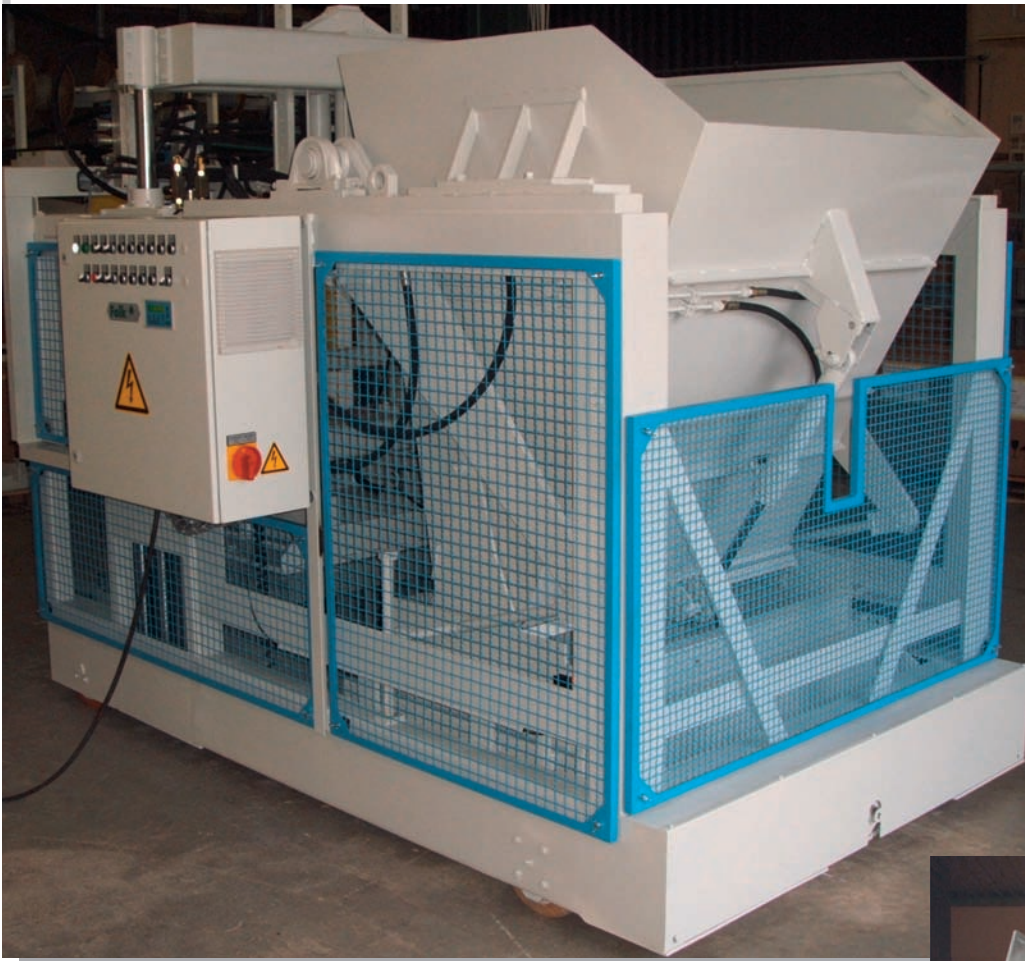


AFS Semi Automatic - Mobile Blockmachine -

Quality
made in
Germany

Folk



Mobile blockmaking machine for floor
production of hollow-, hordi-, retainingwall-
and solid blocks as well as kerbstones
and many other concrete products.

+++ 30 - 45 sec working cycle – production area: 1270 x 1000 mm – min./max. block height: 175/330 mm +++



Adam Folk GmbH

Breitenstrasse 12

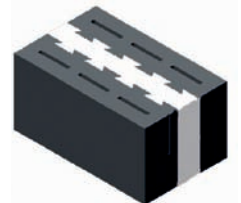
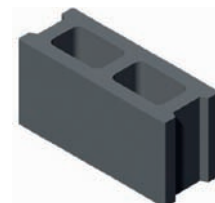
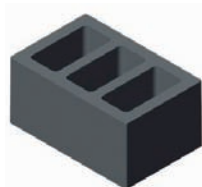
D-89601 Schelklingen

Phone: +49 73 94 30 21

Fax: +49 73 94 30 23

E-mail: info@folk-gmbh.de

Internet: www.folk-gmbh.de



Technical Datas

Dimensions:

Width: 2190 mm
Length: 2920 mm
Height ram in/ram out: 2300/2800 mm
Weight: 4000 kg
Power required: 18 kw
Power supply: 230/400 V – 3 ph – 50 Hz

Features:

- 2 mold vibrators
- 2 head vibrators
- Powerful electro /hydraulic system
- Mold and ram lifting devices
- Hydraulic traveling gear
- Turning device via hydraulic motor
- Drive wheels with synthetic wheel rings
- Concrete hopper with 1300 l capacity
- Rapid mold release unit with brackets for fixing molds from other blockmachines

Production Capacity:

8" hollow block (200 x 400 x 200 mm) appr. 7500 pcs/8hrs
6" hollow block (150 x 400 x 200 mm) appr. 11000 pcs/8hrs
4" hollow block (100 x 400 x 200 mm) appr. 15000 pcs/8hrs



+++ Video on CD +++



Please call +49 7394 3021 or write an e-mail to: info@folk-gmbh.de
CD is missing ?



Folk 

Adam Folk GmbH

Breitenstrasse 12
D-89601 Schelklingen

Phone: +49 73 94 30 21
Fax: +49 73 94 30 23

E-mail: info@folk-gmbh.de
Internet: www.folk-gmbh.de